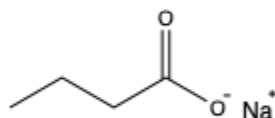
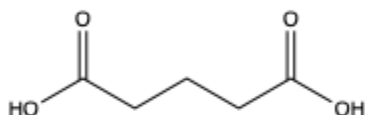
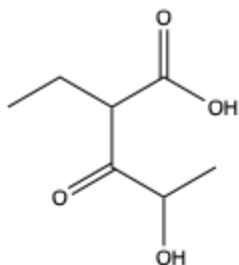


CHEM 2300 Session 11

1. Name/Draw the following molecules



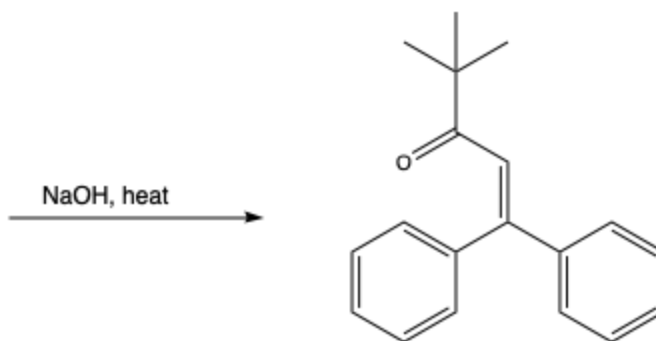
methyl 3-methylhexanoate

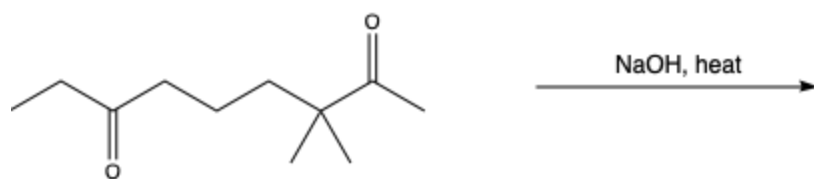
oxalic acid

2. Draw the mechanism from (Z)-hex-3-en-3-ol to 3-hexanone with acidic conditions

3. Give either the starting material or product to the following aldol reactions, draw the mechanism

2





4. Why are carboxylic acids more acidic than alcohols?

5. Give the product for the following reactions. Draw the mechanism for the second one

